

paul seville

LONDON

Leather Fashion Accessories & Boudoir Jewellery

www.paulseville.co.uk

Opulent





"The Cage Waspie"
Style: CGBB-S11-03



"The Lace Waspie"
Style: WSBB-S11-02



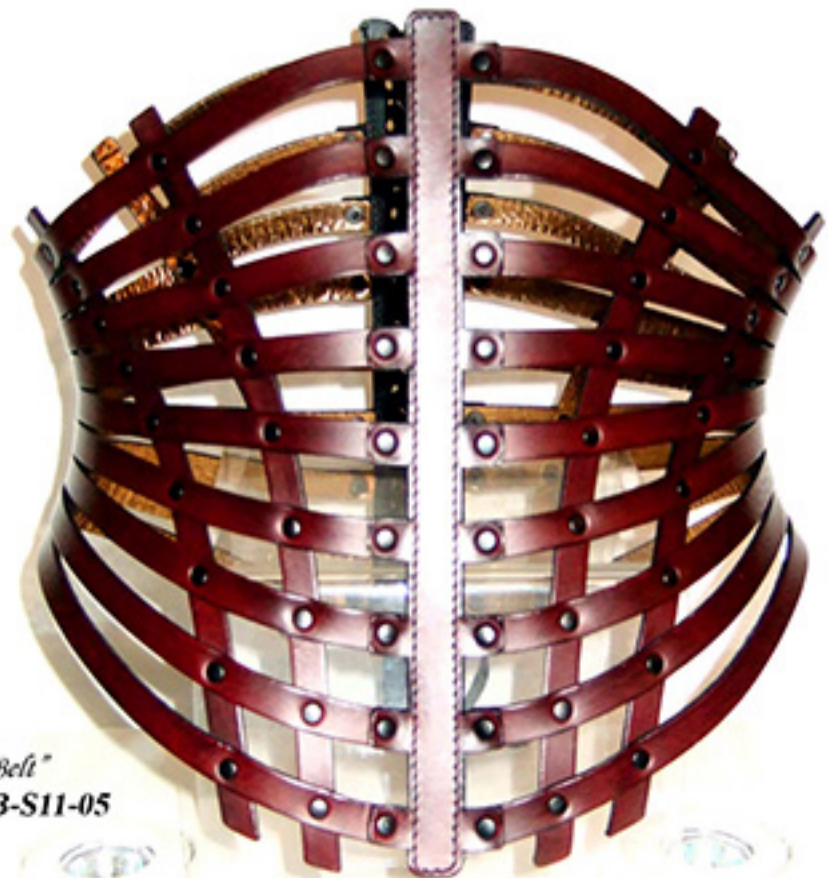
"The Lace Waspie"
Style: WSBB-S11-01



"The Burnt Grey Spine Shaper"
Style: SPBB-W9-24



"The Patent Spine Shaper"
Style: SPBB-S11-04



"The Cage Corset Belt"
Style: CGCB-S11-05



"The Stingray & Chain Handcuffs"
Style: HND-S11-04



"The Finger Handcuffs"
Style: HND-S11-01



"The Crystal Drape Choker"
Style: NE-S11-01



"The Cage Choker"
Style: NE-S11-02



"The Cage Choker"
Style: NE-S11-03



"The Burnt Grey Neckshaper"
Style: NE-W9-38



"The Snake & Chain Finger Handcuffs"
Style: HND-S11-03



"The Gold Blindfold"
Style: MSK-W9-14



"The Stud Patent Blindfold"
Style: MSK-S11-01



"The Moulded Lace Face Mask"
Style: MSK-S11-03



"The Stingray Blindfold"
Style: MSK-W9-11



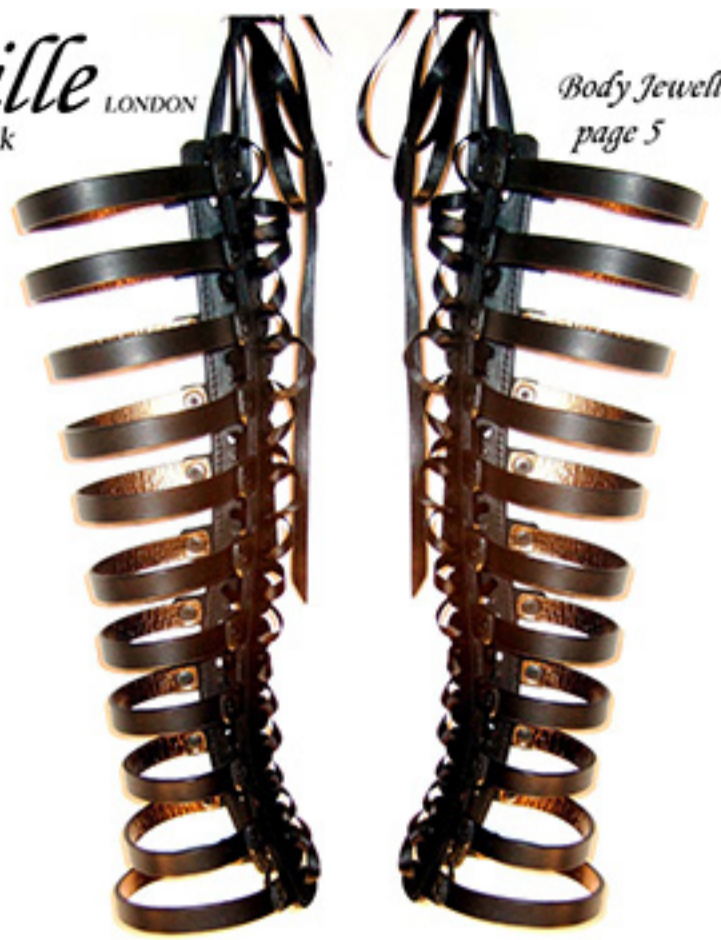
"The Stud Mask"
Style: MSK-S11-02



"The Bubble Mask"
Style: MSK-S11-04



"The Lace Gauntlets"
Style: GNT-S11-01



"The Cage Gauntlets"
Style: GNT-S11-02



"The bubble Gauntlets"
Style: GNT-S11-03



"The Gold Feather Tickler"
Style: FTK-S11-01



"The Face Drape"
Style: FMSK-S11-01



"The Crystal T-Harness"
Style: BJ-S11-04



"The Antique Chain T-Harness"
Style: BJ-S11-03



"The Body Jewellery Drape"
Style: BJ-S11-01



"The Grey Snakeskin T-Harness"
Style: BJ-S11-02



"The Stingray & Chain T-Harness"
Style: BJ-S11-05



"The Bubble & Copper Paddle"
Style: PDL-S11-05



*"The Flogger with
DETACHABLE Cuff"*
Style: WH-S11-01



"The Chain & Leather Flogger"
Style: WH-S11-02

*"The NEW Stingray
Paddle"*
Style: PDL-S11-03



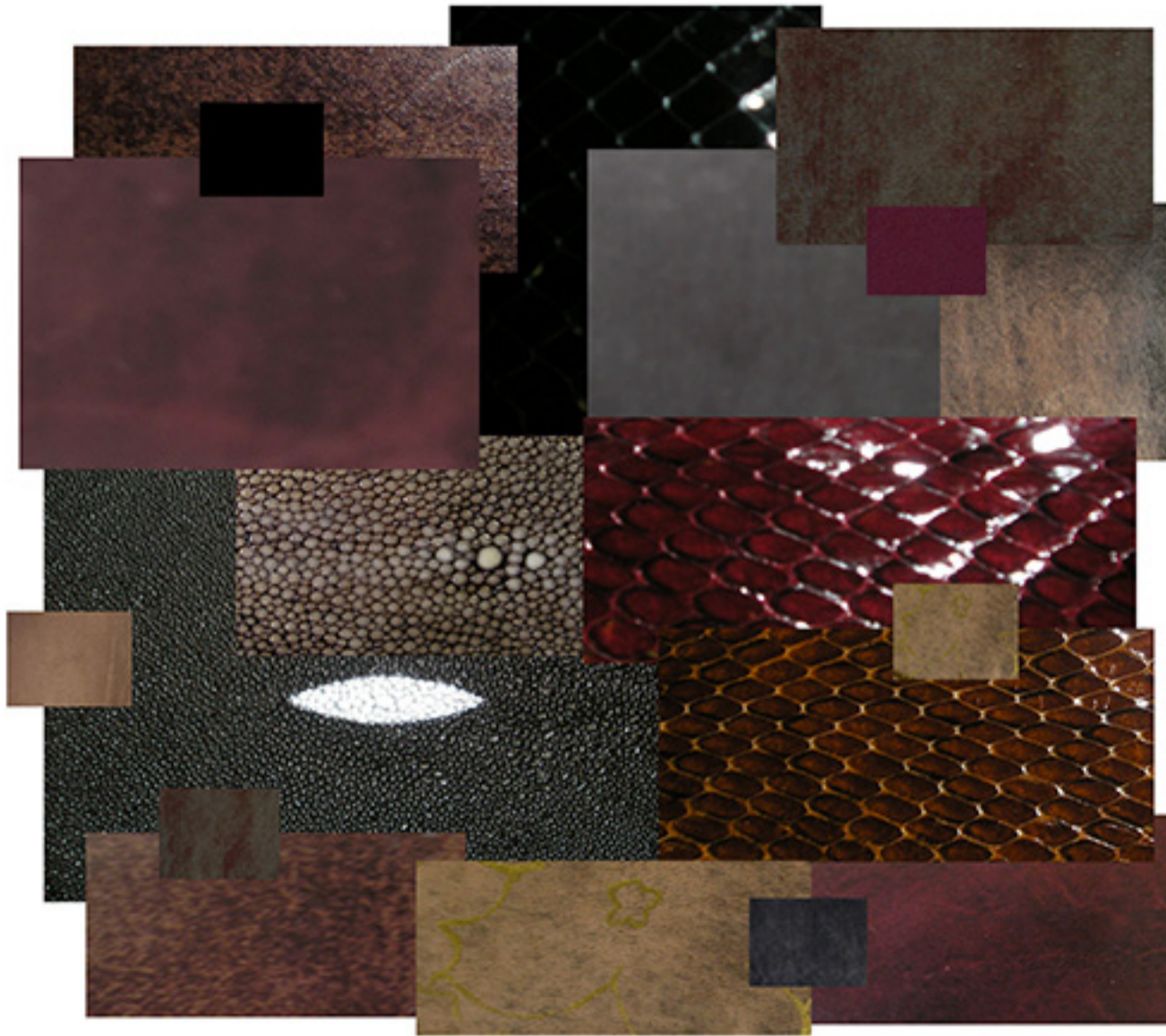
"The Fork Paddle"
Style: PDL-S11-04



*"The Gold Vanity Paddle with
DETACHABLE Cuff"*
Style: PDL-S11-01



*"The bubble Paddle with
DETACHABLE Cuff"*
Style: PDL-S11-02



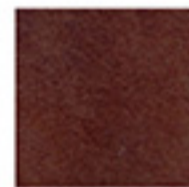
Burnt Black



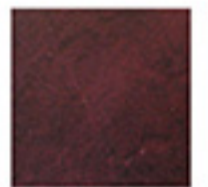
Black Lace



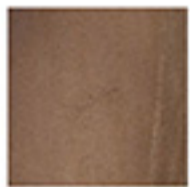
Burnt Brown Lace



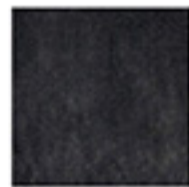
Burnt Brown



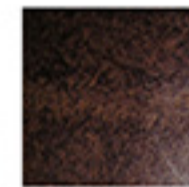
Burnt Claret



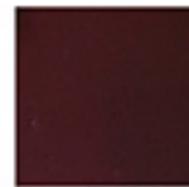
Vintage Coffee



Velvet Grey



Vintage Brown



Wine Patent



Black Patent



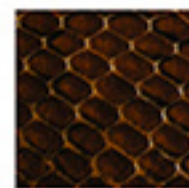
Ebony Stingray



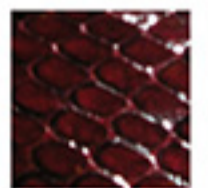
Black Olive Lace



Black Snakeskin



Brown Snakeskin



Wine Snakeskin

Please note: All colours are approximate & may vary according to the style selected & the nature of the Leather.